



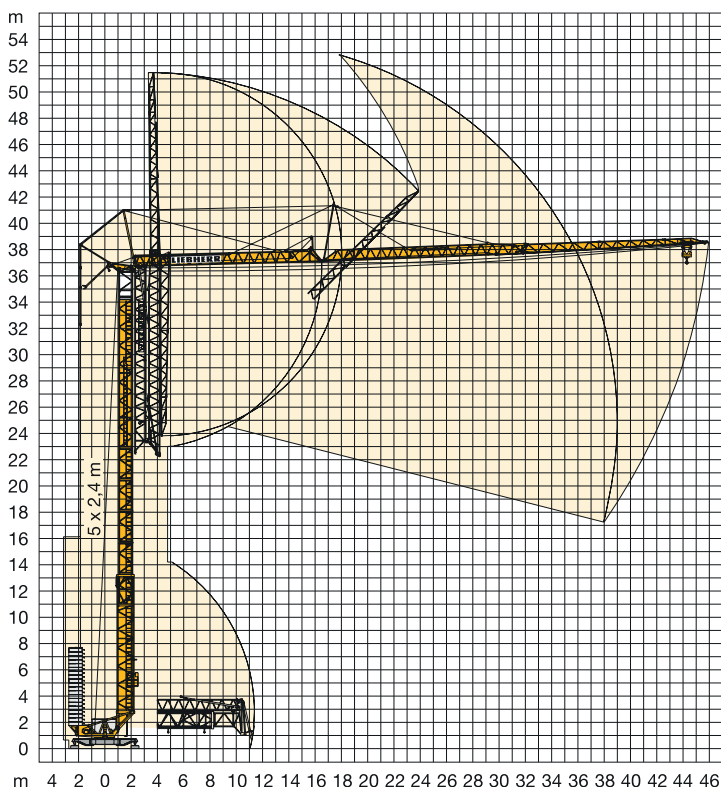
# Vyložení a nosnost

vyložení max. kg		nosnost m/kg 2,9/3,5 m																						
m	m/kg	18,0	20,0	22,0	24,0	26,0	28,0	29,0	30,0	<b>31,0</b>	32,0	33,0	34,0	35,0	36,0	<b>37,0</b>	38,0	39,0	40,0	41,0	<b>42,0</b>	43,0	44,0	<b>45,0</b>
<b>45,0</b>	3,3 – 20,3 3050	3050	3050	2790	2530	2310	2120	2040	1960	1890	1820	1750	1690	1630	1580	1530	1480	1430	1390	1350	1310	1270	1240	<b>1200</b>
<b>42,0</b>	3,3 – 22,1 3050	3050	3050	3050	2780	2540	2340	2240	2160	2080	2000	1930	1870	1800	1750	1690	1640	1590	1540	1490	<b>1450</b>			
<b>37,0</b>	3,3 – 23,3 3050	3050	3050	3050	2950	2700	2480	2390	2290	2210	2130	2060	1990	1920	1860	<b>1800</b>								
<b>31,0</b>	3,3 – 25,0 3050	3050	3050	3050	3050	2920	2690	2590	2490	<b>2400</b>														

m/kg		2,9/3,5 m																						
m	m/kg	10,0	11,0	12,0	13,0	14,0	16,0	18,0	20,0	22,0	24,0	26,0	28,0	30,0	<b>31,0</b>	33,0	35,0	<b>37,0</b>	39,0	41,0	<b>42,0</b>	43,0	44,0	<b>45,0</b>
<b>45,0</b>	3,3 – 20,0 3000	6000	5810	5290	4850	4470	3860	3390	3000	2690	2430	2210	2030	1860	1790	1650	1540	1430	1330	1250	1210	1170	1140	<b>1100</b>
<b>42,0</b>	3,3 – 21,7 3000	6000	6000	5780	5310	4900	4230	3710	3300	2960	2680	2440	2240	2060	1980	1830	1710	1590	1490	1390	<b>1350</b>			
<b>37,0</b>	3,3 – 22,9 3000	6000	6000	6000	5620	5190	4490	3940	3510	3150	2850	2600	2380	2200	2110	1960	1820	<b>1700</b>						
<b>31,0</b>	3,3 – 24,7 3000	6000	6000	6000	6000	5610	4850	4270	3800	3410	3090	2820	2590	2390	<b>2300</b>									

šikmý výložník 30° m/kg		2,9/3,5 m																					
m	m/kg	14,0	15,0	16,0	18,0	20,0	22,0	24,0	25,0	26,0	<b>26,6</b>	28,0	30,0	31,0	<b>31,7</b>	33,0	34,0	35,0	<b>36,0</b>	37,0	38,0	<b>38,5</b>	
<b>45,0</b>	3,1 – 14,3 3000	3000	2970	2760	2400	2120	1890	1700	1610	1530	1490	1390	1270	1220	1180	1120	1070	1030	990	950	910	<b>900</b>	
<b>42,0</b>	3,1 – 15,4 3000	3000	3000	3000	2620	2310	2060	1850	1760	1680	1640	1530	1400	1340	1300	1230	1180	1140	<b>1100</b>				
<b>37,0</b>	3,1 – 16,9 3000	3000	3000	3000	2870	2540	2270	2050	1950	1860	1810	1690	1550	1490	<b>1450</b>								
<b>31,0</b>	3,1 – 18,9 3000	3000	3000	3000	3000	2860	2560	2310	2200	2100	<b>2050</b>												

## Montážní schéma



## Příkony a rychlost el. motorů

	rychlost	spotřeba
	0 ↔ 0,8 U/min. sl./min tr./min	5,0 kW EDC
	0 ↔ 60,0 m/min	2,8 kW FU

	rychlost	kg	m/min
15,0 kW FU	1	3000 6000	5,0 2,5
	2	3000 6000	24,0 12,0
	3	2100 4200	34,0 17,0
	4	1300 2600	58,0 29,0

### přípojka

400 V; 25 kW; 63 A

IP Systém a.s.  
U Panelárny 573/3  
779 00 Olomouc

+420 724 245 723  
ipsystem@ipsystem.cz  
www.ipsystem.cz